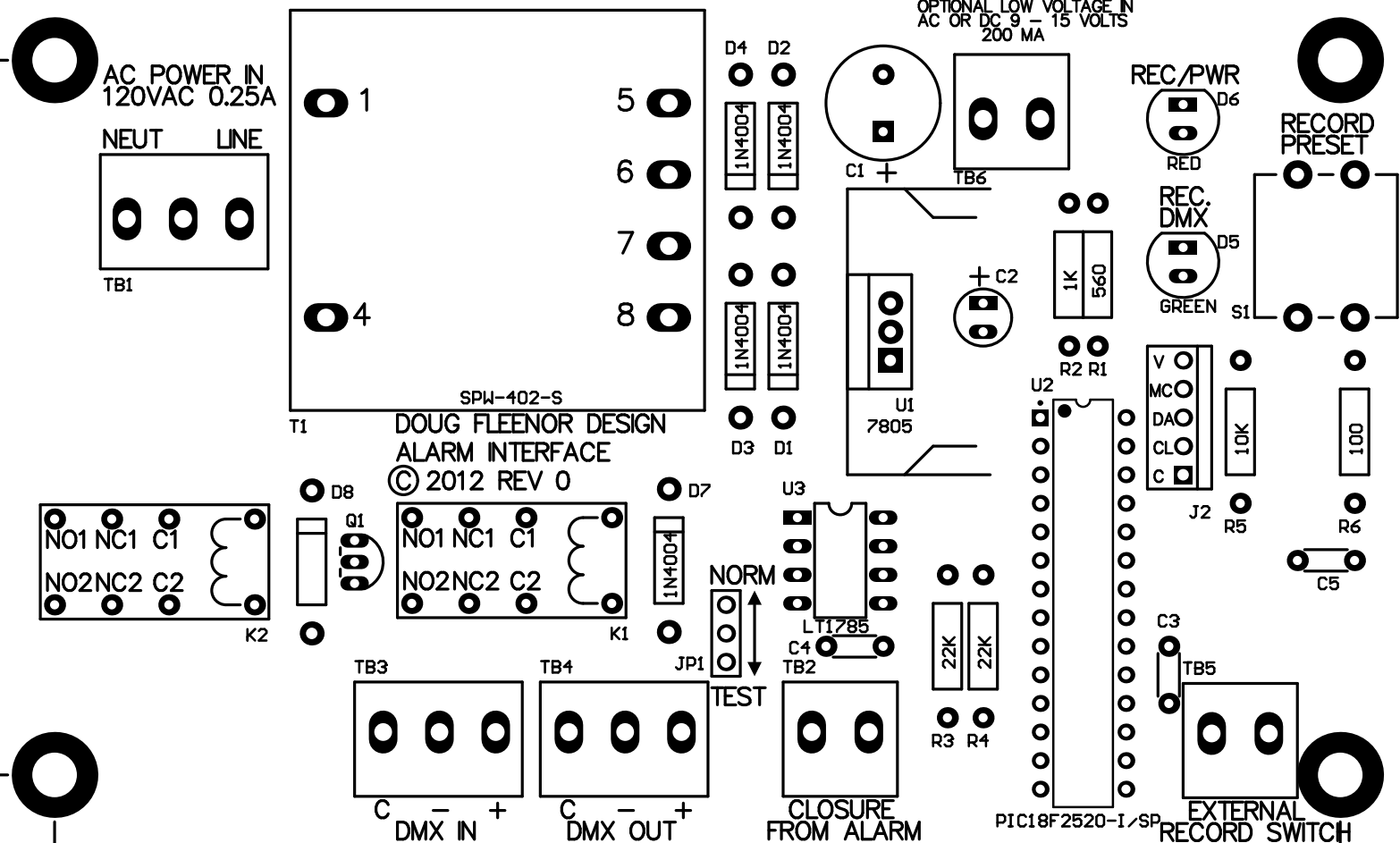


4.210

TO RECORD THE LOCAL "EMERGENCY" PRESET:
 1: CONNECT A DMX SOURCE TO THE DMX INPUT.
 2: SET THE DESIRED EMERGENCY LIGHTING LEVELS.
 3: PRESS THE "RECORD PRESET" SWITCH. THE LEDS WILL FLASH BRIEFLY TO CONFIRM RECORDING.
 4: MOVE THE CLOSURE TEST JUMPER (JP1) TO THE "TEST" POSITION TO VERIFY RECORDED LEVELS.
 5: MOVE THE CLOSURE TEST JUMPER (JP1) BACK TO THE "NORM" POSITION.

3.355



0.855

WHILE THE CLOSURE INPUTS ARE OPEN (NOT SHORTED) "DMX IN" SIGNALS ARE PASSED TO "DMX OUT"
 WHILE THE CLOSURE INPUTS ARE SHORTED "DMX OUT" IS DRIVEN BY THE LOCAL "EMERGENCY" PRESET

0.000

0.000
0.2504.750
5.000

TOL: 0.010 IN.

MATERIAL: 0.062 FR4
1 OZ. COPPER, 2 SIDESFINISH: TIN 63
SOLDERMASK BOTH SIDES
SOLDERMASK OVER BARE COPPER
SILK SCREEN TOP SIDEDRAWN BY:
M. DAVISDATE:
NOV. 6, 2011

TITLE

ALARM INTERFACE

REV:

0

FILE NAME:
Alarm Interface.PcbDocDOUG FLEENOR DESIGN, INC.
396 CORBETT CANYON ROAD
ARROYO GRANDE, CA 93420
PHONE & FAX (805) 481-9599